

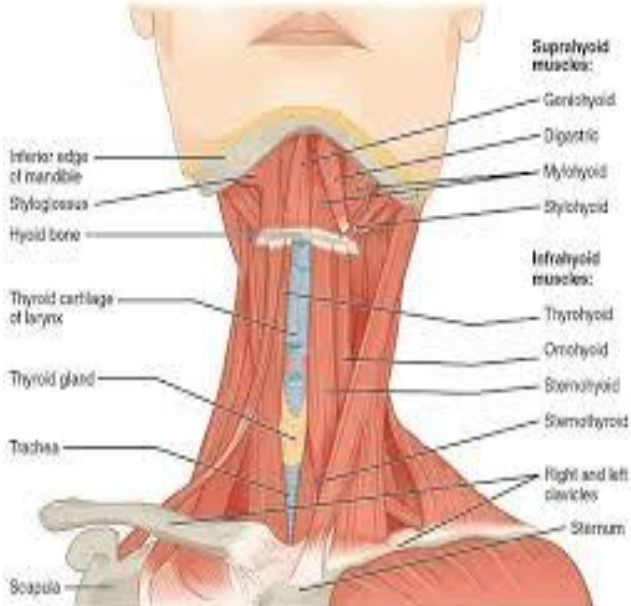
CLINICAL APPLICATION OF THE PLATYSMA MUSCLE

BY: DR. ANTHONY J. LOMBARDI

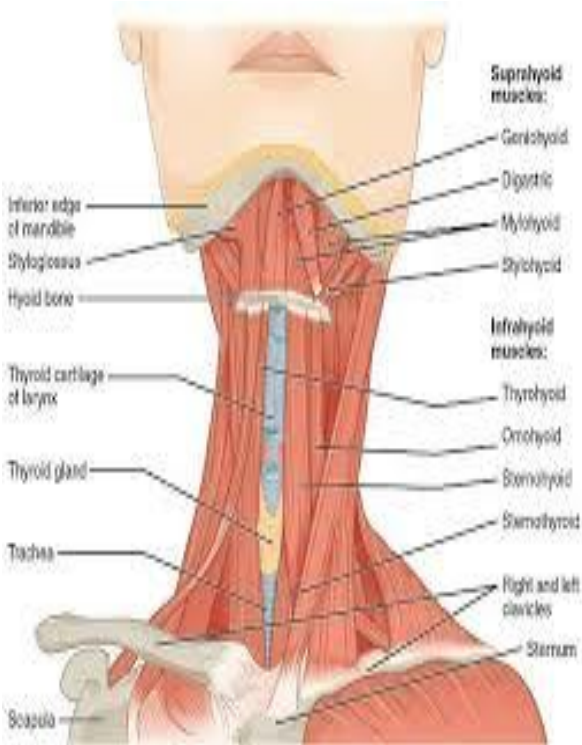
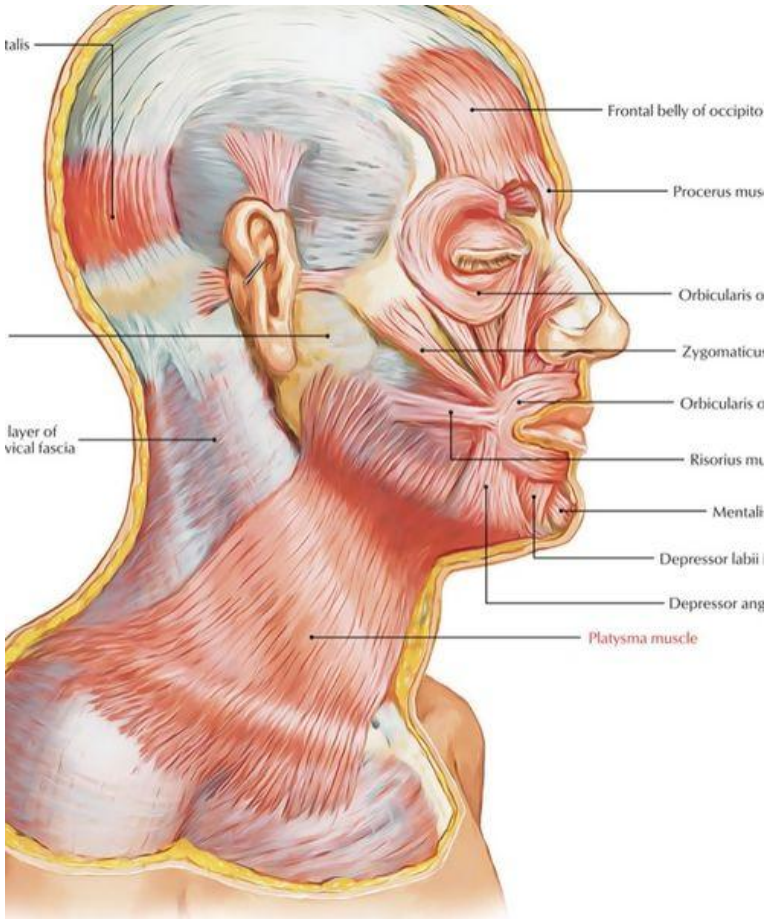
JULY 16, 2021

ANATOMY

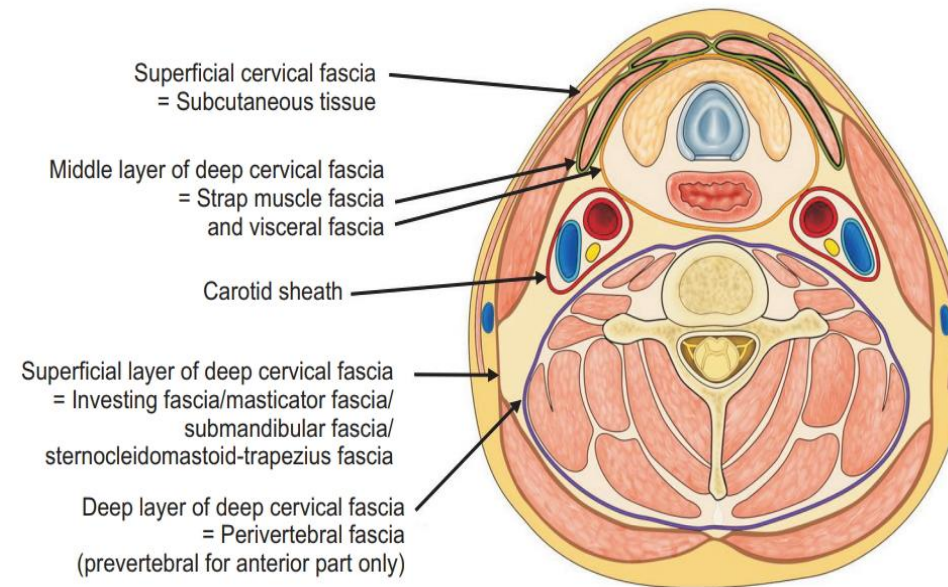
THE LAYERS



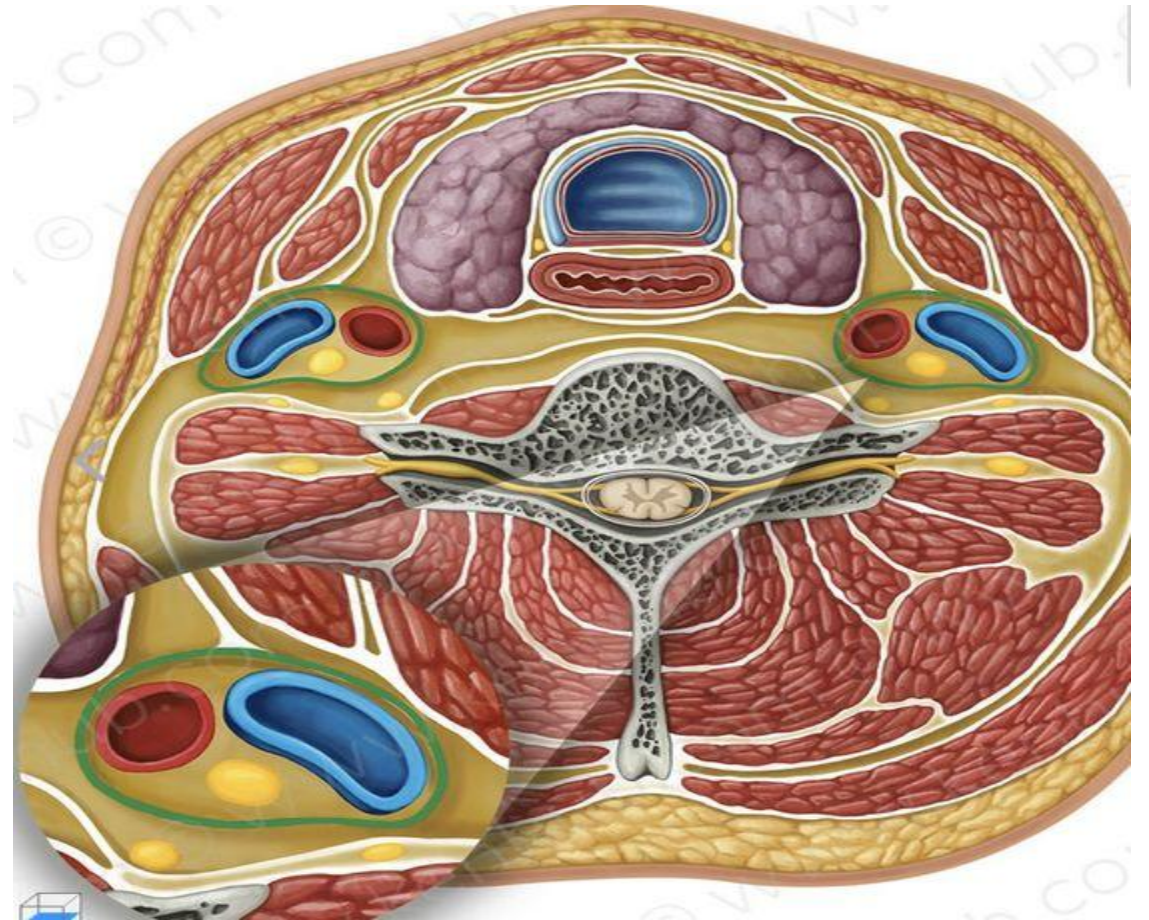
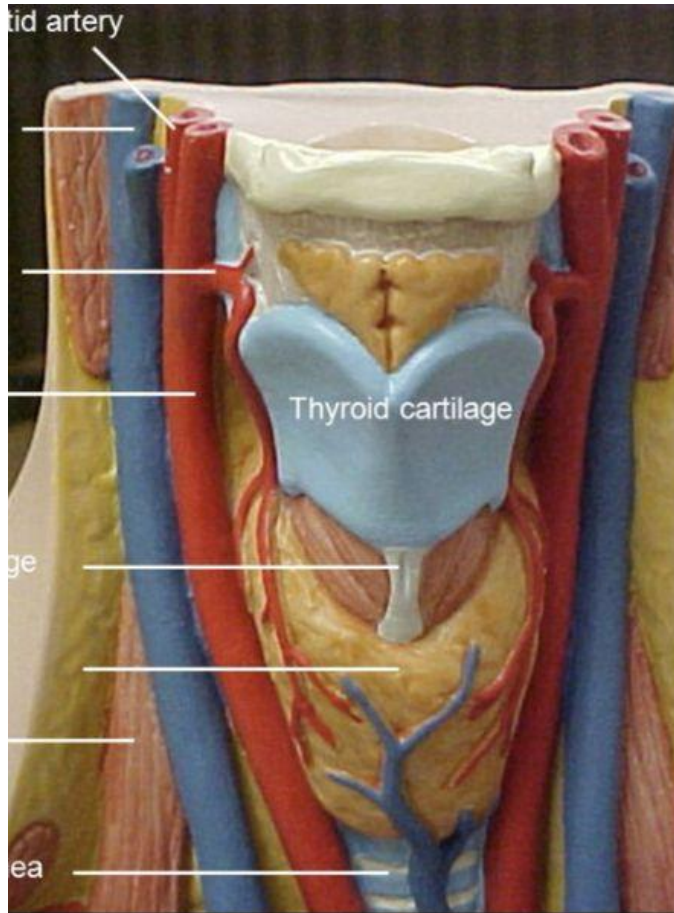
ATTACHMENTS, INNERVATIONS, ACTIONS



CROSS-SECTIONAL VIEW



MORE UNDERSTANDING ANATOMY

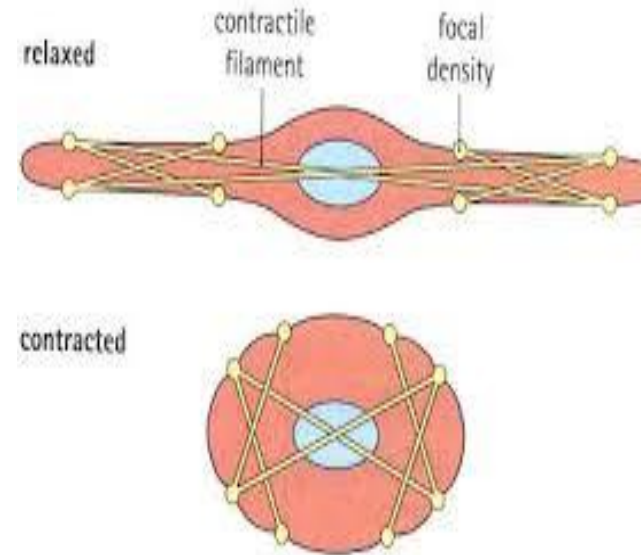


THE FASCIA

SMOOTH MUSCLE

-THIS IS BIG NEWS IN THE WORLD OF FASCIA BECAUSE SMOOTH MUSCLE IS INNERVATED BY THE AUTONOMIC NERVOUS SYSTEM (ANS)

-UNDER THE INFLUENCE OF THE ANS THE FASCIA ITSELF CAN ACTUALLY CONTRACT UPON CHANGE IN THE SYMPATHETIC NERVOUS SYSTEM.



CLINICAL MEANING: ANS & THE FASCIA

- THE FASCIA IS THE ANS ACCORDING TO ROBERT SCHLEIP.
- NON-CHRONIC SYSTEMIC PATIENTS WITH A COMBINATION HISTORY OF: SPORTS INJURIES, PHYSICAL TRAUMA, MULTIPLE SURGERIES, REPETITIVE STRAINS OCCUPATIONS OR POSITIONS, LONG-STANDING MSK CONDITIONS THAT GO UNMANAGED – HAVE A HIGHER SYMPATHETIC TONE.
- IN THESE PATIENTS, NOXIOUS STIMULI CAN ALTER “MECHANOSENSATION” WHICH MODIFIES MUSCLE CO-ORDINATION AND JOINT STABILITY – MOTOR INHIBITION.

FUNCTIONS OF THE PLATYSMA

- MAKES UP THE CERVICAL FASCIA
- ENCASES UNDERLAYING STRUCTURES
 - SCM, SYMPATHETIC CHAIN, CAROTID SHEATHS ETC
- DEPRESSES FACIAL TISSUE

CLINICAL POINTERS ABOUT THE PLYSMA

- INTERACTIONS: CERVICAL PLEXUS, TRANSVERSE CERVICAL NERVE, SUPRACLAVICULAR NERVE, FACIAL NERVE CERVICAL BRANCH
- ATTACHMENTS TO CLAVICLE, STERNUM, MANDIBLE UNDERLYING FASCIA OF MUSCULAR DEEP TO IT
- ANTAGONISTIC TO MASSETER AND TEMPORALIS

MECHANISM OF INJURY



CONDITIONS WHERE YOU TREAT
PLATYSMA

LIST OF CONDITIONS/CAUSES

- FACIAL NERVE PALSY
- TMJ
- NECK ROM ISSUES
- SCARRING FROM ANTERIOR CERVICAL REGION
- CLAVICULAR DYSFUNCTION

FACIAL NERVE PALSY

- CERVICAL BRANCH OF THE FACIAL NERVE
- TRUNK LOCATED ANTERIOR TO THE TRAGUS OF THE EAR

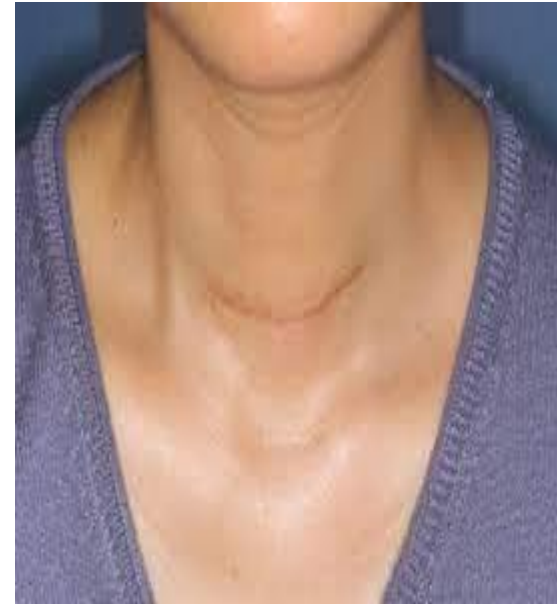
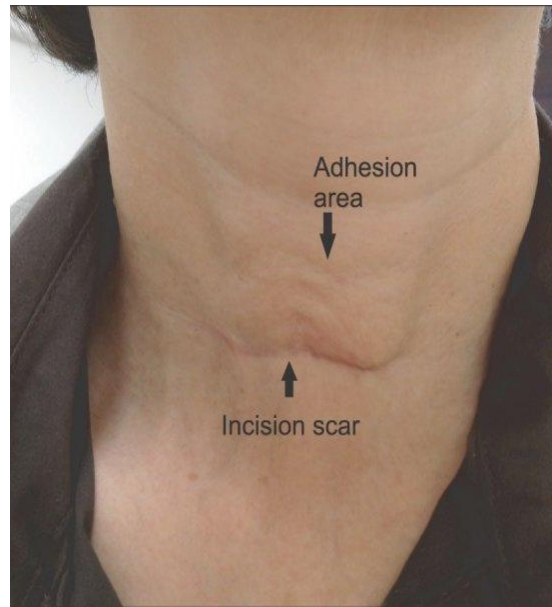
CLAVICULAR RESTRICTION

- IT CAN INFLUENCE CLAVICULAR ROTATION AND ELEVATION
- SPECIFICALLY IN AN AC JOINT INJURY OR HEALED CLAVICULAR FRACTURE.

CERVICAL SPINE RESTRICTION

- DECREASE IN NECK EXTENSION ALWAYS CONTRIBUTES TO PLATYSMA RESTRICTION WHICH CAUSES MORE ROM PROBLEMS.

POST SURGERY IE THYROID



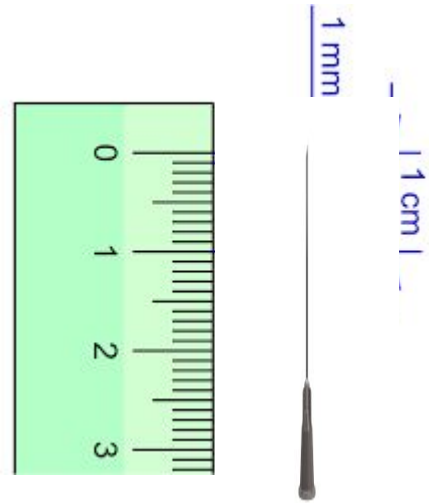
PROPOSED TREATMENTS OF PLATYSMA

SPECIALIZED ELECTROACUPUNCTURE PROTOCOLS

- IN-LINE TECHNIQUE ACROSS STATIC BONY LANDMARKS
- MOTOR POINT OF PLATYSMA

SAFETY PROTOCOLS

HOW DEEP IS 2 MM VS 25 MM?



MANUAL FASCIAL WORK

Fig. 8-29 Hyoid Treatment



Fig. 8-30 Treatment of the Hyoid and Thyroid Cartilage

